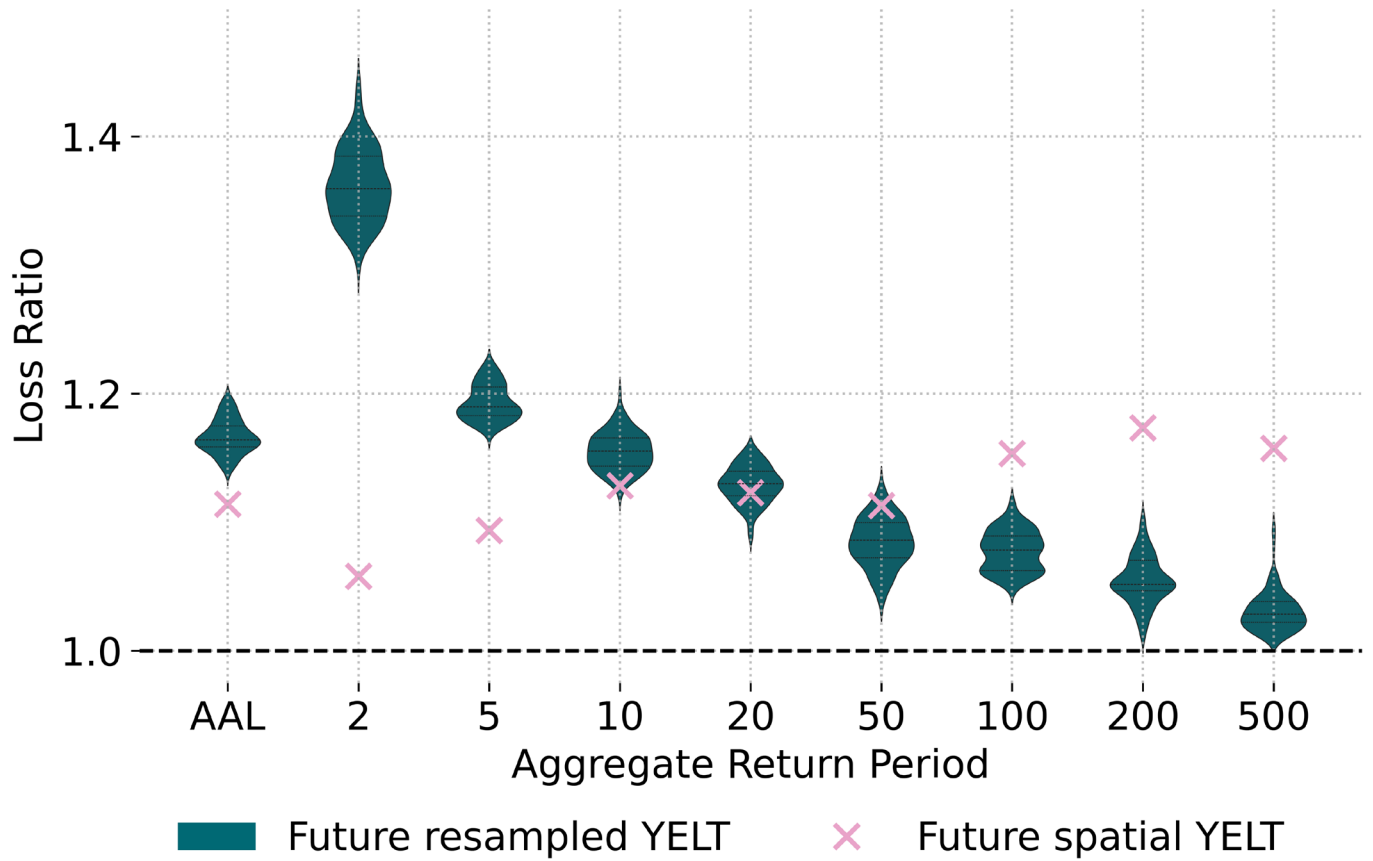


Supplementary material for | Volume 04 Article 03

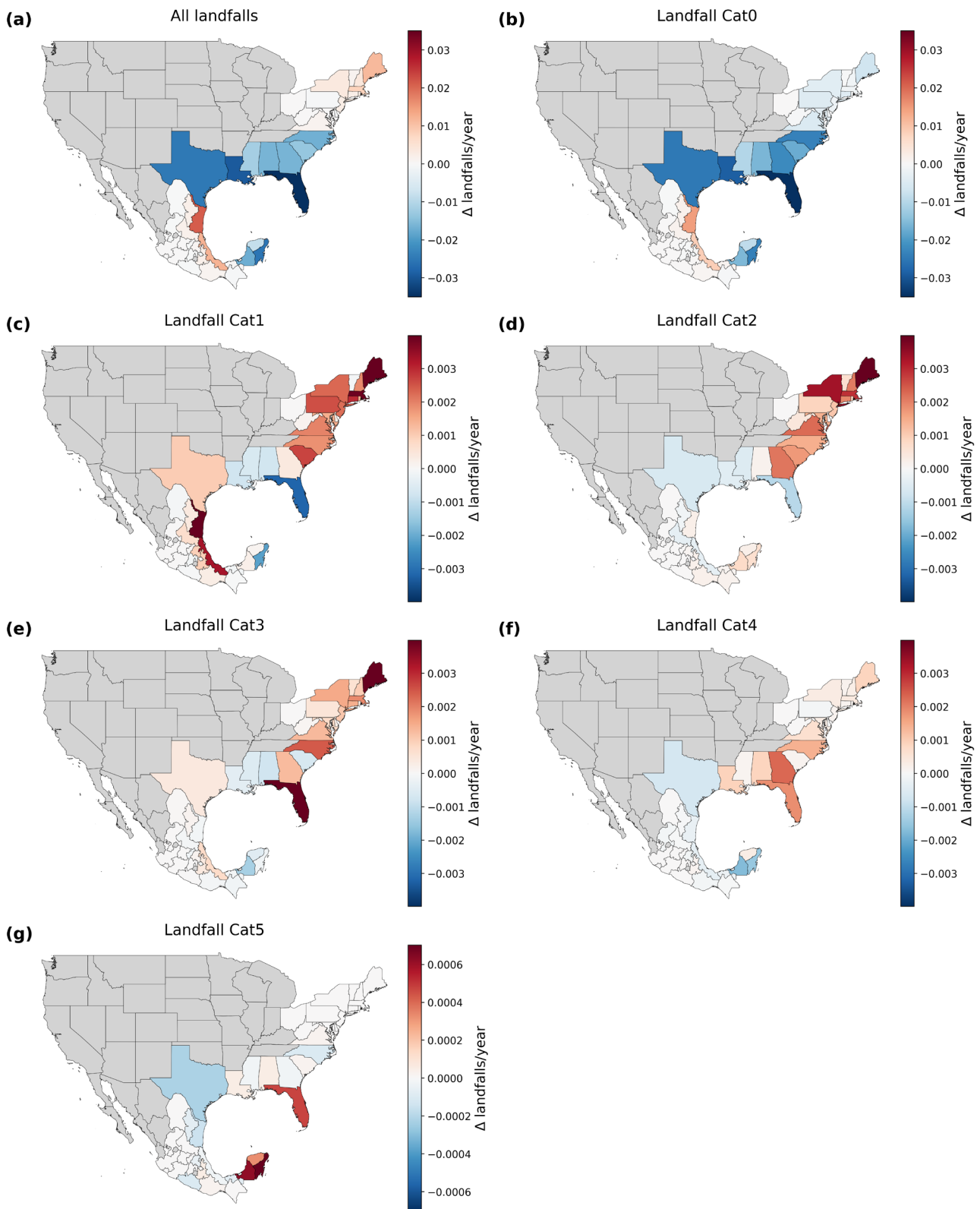
## Recalibrating Risk: A Simplified Model for North Atlantic Hurricanes in a Warming Climate

**Table S1:** Zero-one inflated Beta distribution parameters. The 95% confidence intervals of each parameter are indicated in parentheses.

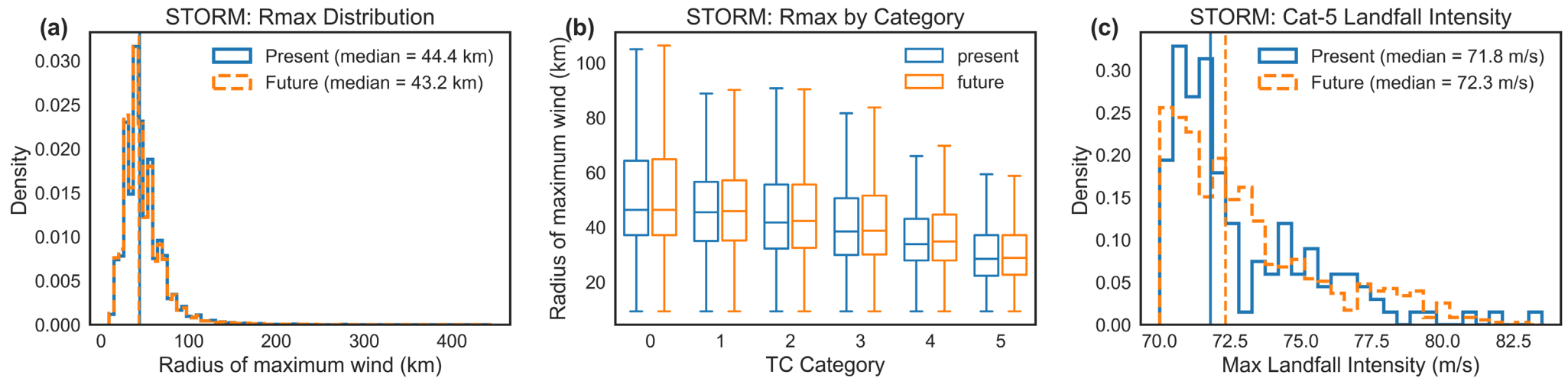
Region	P0	P1	Alpha	Beta
GoM and C. Am.	0.08 (0.04-0.12)	0.60 (0.53-0.68)	9.19 (6.41-12.06)	1.83 (1.27-2.40)
Cent. Carib.	0.23 (0.11-0.34)	0.19 (0.09-0.30)	6.57 (4.30-11.78)	1.60 (1.03-2.63)
Lesser Antilles	0.89 (0.83-0.94)	0.02 (0.00-0.04)	8.94 (6.47-26.03)	4.33 (2.64-15.64)
N. Am. E. Coast	0.77 (0.71-0.82)	0.07 (0.04-0.10)	4.74 (3.32-7.48)	1.55 (1.07-2.56)



**Figure S1:** Ratio of average annual loss (AAL) and losses at given aggregate return periods ( $1/\text{aggregate exceedance probability}$ ; AEP) between future and historical YELT.



**Figure S2:** Change in annual TC landfalls per state and by category between STORM present and future climate tracks.



**Figure S3:** Comparison between STORM present and future climate tracks: (a) distribution of radius of maximum wind ( $R_{max}$ ). The box shows the interquartile range (25th–75th percentile) with the median indicated by the center line; whiskers extend to 1.5x the interquartile range (IQR). Outliers are not displayed. (b) distribution of  $R_{max}$  by category, and (c) distribution of landfall wind speeds for category 5 landfalling TCs.